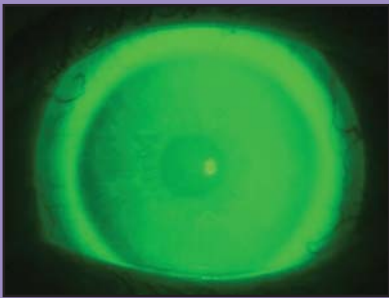


AMPLEYE®

Scleral GP

Designed to fully vault the cornea and limbus and land gently on the sclera with 360° of alignment.



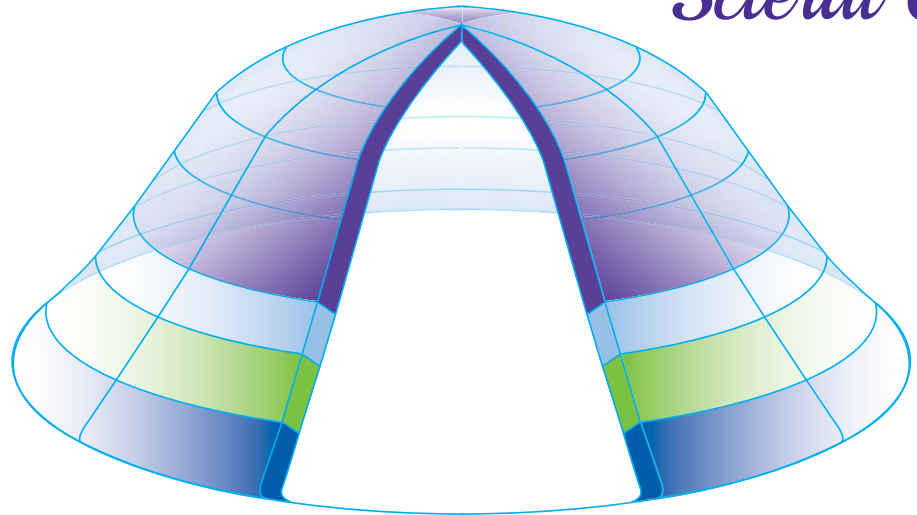
With Ampleye, there is no corneal involvement, so irregular cornea fitting is simplified & patient comfort is unequalled.

Patient Considerations:

Ampleye is an excellent option for patients with:

- **Irregular corneas**
- **Lens stability issues**
- **Corneal GP intolerance**

Plus: Ampleye is **FDA indicated** for therapeutic use and the safe and effective management of **ocular surface disease and dry eye complications.**



Efficiently Affordable Diagnostic Set

- fit a wide range of eyes, from a highly prolate bulging graft to a low sag oblate cornea, with very few trials
- toric haptic diagnostic lenses ensure accurate trial assessment & eliminates guesswork on Rx orders



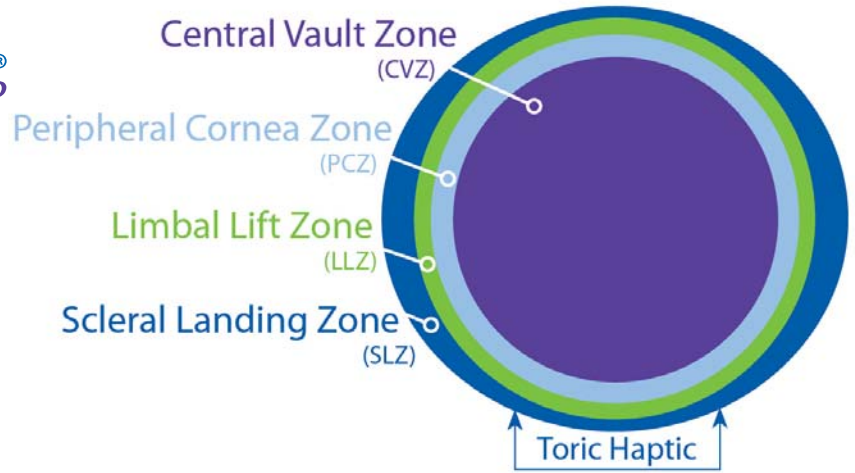
Unique 4-zone construction with Spline Science Technology

- 16.5mm optimal diameter (15.0-17.0mm available)
- independent zone adjustments available in a wide range of options for finite control of the lens fit
- optimally engineered landing zone for wide & even distribution of pressure, minimizing blanching & edge modifications
- employing **Spline Science** for an incredibly forgiving fit & enhanced first-fit success
- aided by inherent toricity, the natural tear layer and full circumference closure ensure soothing moisture retention for lasting hydration and comfort

OPTIMUM
tangible™
HYDRA-PEG

Exclusively from:
ARTOptical
contact lens, inc.

800.253.9364 • www.artoptical.com



No Risk Warranty:

Our worry-free approach to successful specialty lens fitting provides two refits per eye and full cancellation privileges for 90 days!

Guaranteed Fit Program also available - ask for details!

Professional Support:

Our large, experienced professional consultation team is available weekdays until 5:30 pm EST to enhance your Ampleye fitting experience.

Initial Rx Orders include FREE Patient Starter Kit!



Central Vault Zone (CVZ)

| 16.5mm Diameter | | BASE CURVE | |
|-----------------|------------|------------|------|
| SAGITTAL DEPTH | 3,800..... | | 8.44 |
| | 4,000..... | | 8.44 |
| | 4,200..... | | 8.04 |
| | 4,400..... | | 8.04 |
| | 4,600..... | | 8.04 |
| | 4,800..... | | 8.04 |
| | 5,000..... | | 7.34 |
| | 5,200..... | | 7.34 |
| | 5,400..... | | 6.04 |
| | 5,600..... | 6.04 | |

| 15.0/15.5mm Diameter | | BASE CURVE | |
|----------------------|------------|------------|------|
| SAGITTAL DEPTH | 3,200..... | | 8.65 |
| | 3,400..... | | 8.65 |
| | 3,600..... | | 8.45 |
| | 3,800..... | | 8.04 |
| | 4,000..... | | 7.50 |
| | 4,200..... | | 7.03 |
| | 4,400..... | | 6.75 |
| | 4,600..... | | 6.75 |
| | 4,800..... | | 6.75 |

Standards as listed for central sag and base curve radius. Once the sag is set centrally, the base curve can be adjusted flatter or steeper while maintaining the same sag but it will affect the final resulting depth (+/-) by the amount of base curve radius change input (+/-). The range in adjustment is from 9.64mm (35.00D) to 5.72mm (59.00D). Each diopter of base curve change = 50µm.

Available Parameters:

Peripheral Cornea Zone (PCZ)

Standard = 0

Adjustable in 1.0 steps to +/-15.00

Limbal Lift Zone (LLZ)

Standard = 0

Adjustable in 1.0 steps to +/-15.00

Scleral Landing Zone (SLZ)

Standard = 0

Adjustable in 1.0 steps to +/-15.00

SLZ Quadrant Control

Standard Q1 & Q3 = 0

Standard Q2 & Q4 = 150µm

Each quadrant adjustable in 1.0 steps to +/-15.00.

PCZ/LLZ/SLZ Adjustments:

Each step = 25µm of change

Sphere Power

+/-20.00* in 0.25D steps

*can be extended on order of practitioner

Cylinder Power

Up to -5.00D in -0.25 steps

Axis

1° to 180° in 1° steps

Thickness

Standard = .30mm

Adjustable in .10 steps to .50mm

Center Near Multifocal

Add power from +1.00D to +3.50D in 0.25D steps.

Standard center near zone = 2.00mm; adjustable from 1.00-4.00mm in 0.50mm steps

Call 800.566.8001